

The background features abstract, overlapping geometric shapes in various shades of green, ranging from light lime to dark forest green. These shapes are primarily located on the left and right sides of the page, framing the central white area where the text is placed.

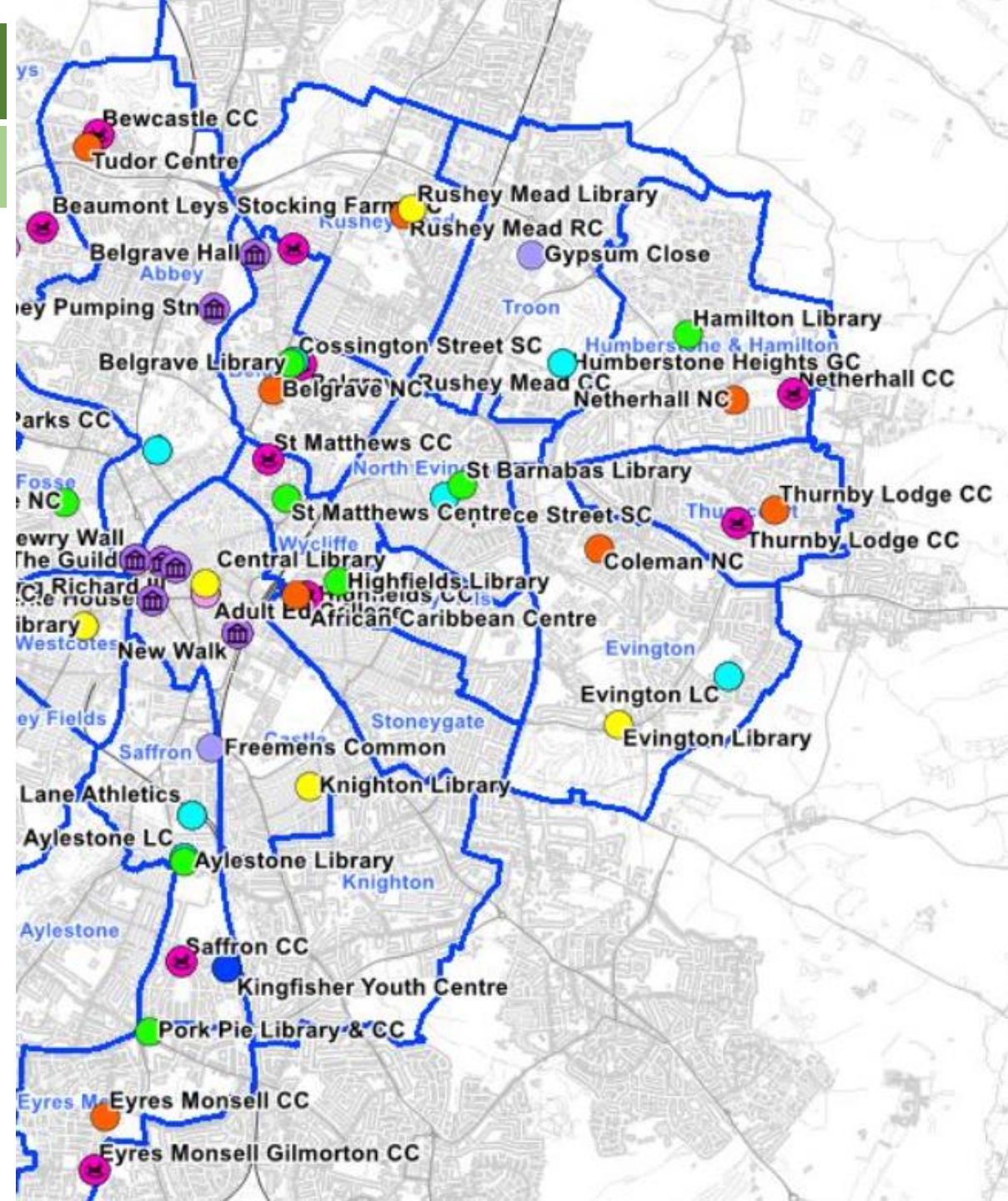
Neighbourhood and Environmental Services JUNE 2024

Scrutiny Report

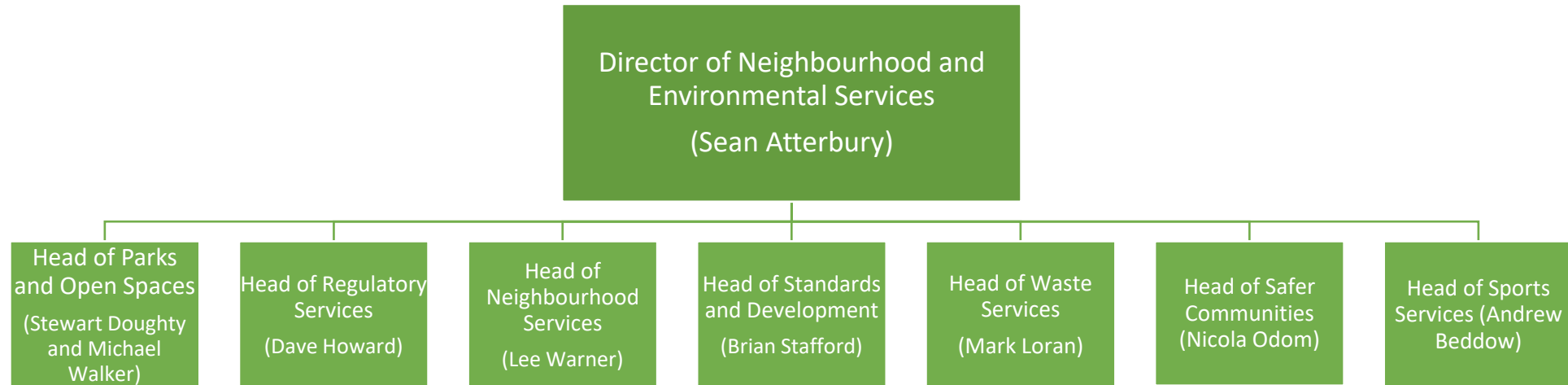
Neighbourhood & Environmental Services

Scrutiny Overview

- Is the largest division of City Development and Neighbourhoods
- Provides services that support residents across the city and in our communities
- Is not just about places, but also about people
- Contributes to the health and wellbeing of society through its services and the opportunities it provides



Divisional Structure



Headline responsibilities

Parks and open spaces

- Trees
- Bereavement
- Volunteers
- Grounds maintenance

Regulatory Services

- Trading standards
- Taxi
- Licensing and enforcement
- Private Sector Housing
- Selective Licensing
- Food
- Noise

Standards and Development

- Allotments / community growing spaces
- City Wardens
- Fly tipping
- EnviroCrime
- Landscape development
- Pest and Dogs

Neighbourhood Services

- Library services
- Reader development
- Childrens Book bus
- Neighbourhood Centres
- Ward funding schemes

Waste Services

- Client for Biffa PFI contract
- Household waste site operations
- Bulky waste administration
- Waste Strategy development
- Waste education

Safer Communities

- Community Safety Team
- CRASBU / HASBU team
- Prevent
- Changing futures
- Community Safety partnership

Sports Services (Active Leicester)

- Leisure Centre provision
- Athletics
- Outdoor recreation
- Citywide strategy development

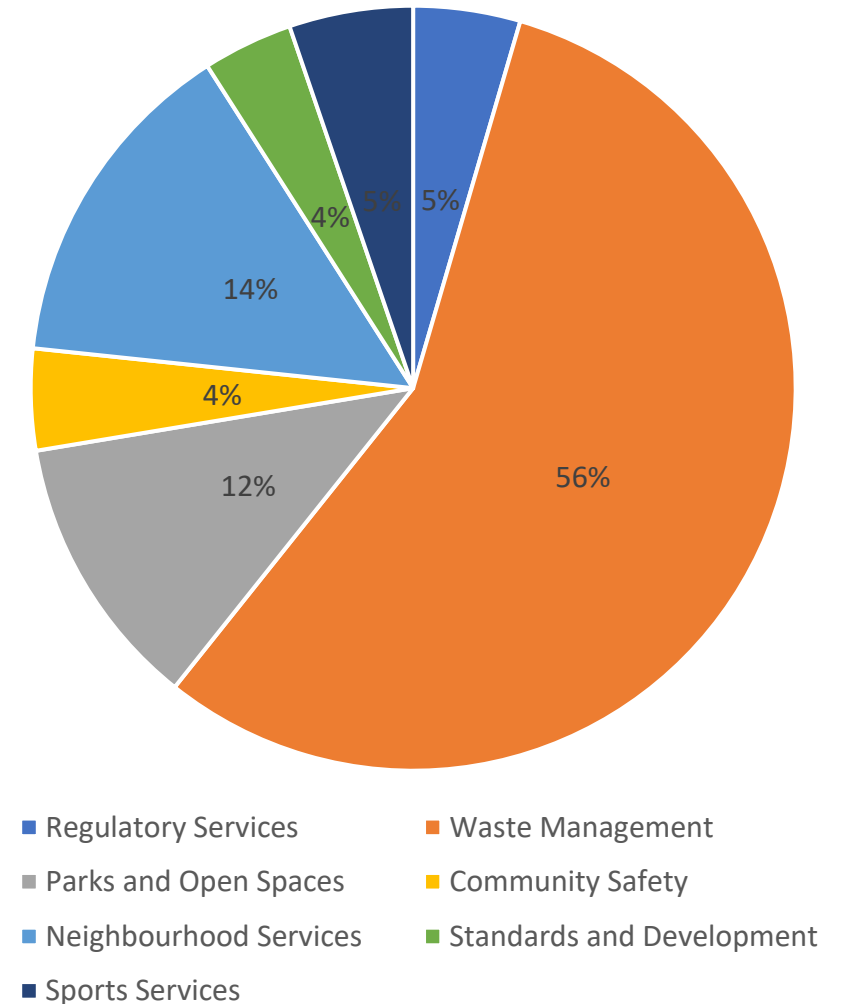
Neighbourhood & Environmental Services

Scrutiny Overview

Net Budget breakdown

Service	
Regulatory Services	£1.9m
Waste Management	£23.6m
Parks and Open Spaces	£4.9m
Safer Communities	£1.8m
Neighbourhood Services	£6.0m
Standards and Development	£1.6m
Sports Services	£2.2m
Overall	£42.0m

Budget breakdown

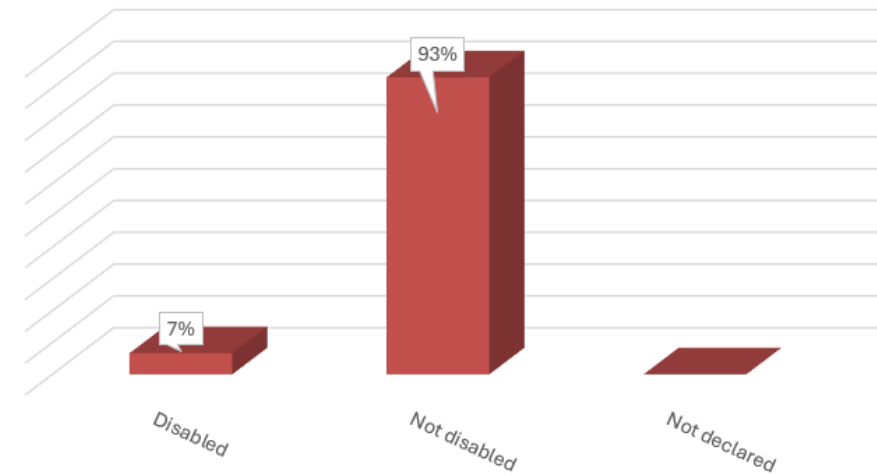
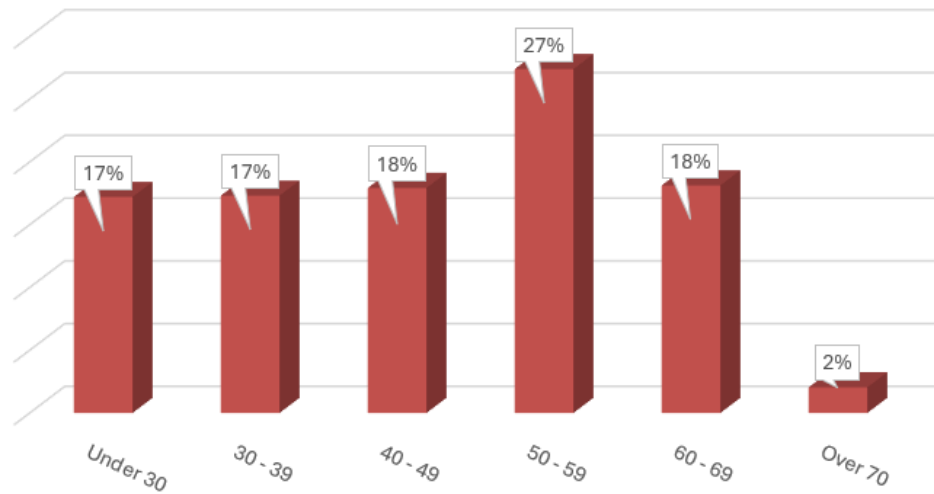
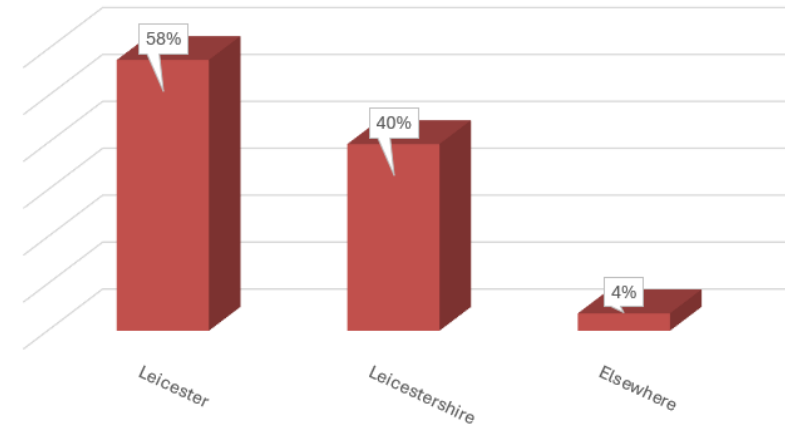
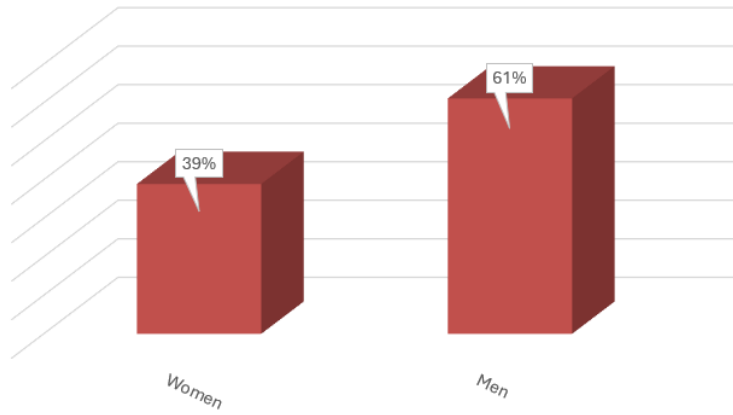


Neighbourhood & Environmental Services

People profile

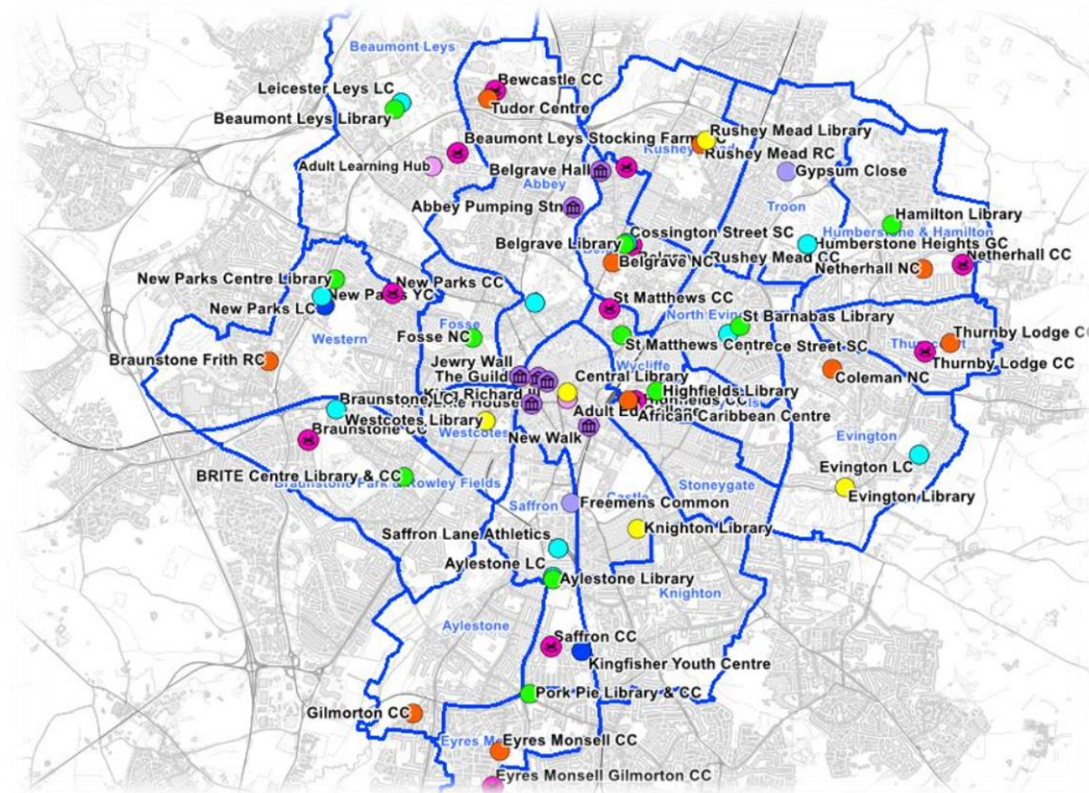
Scrutiny Overview

Headcount	967
FTE	804



Neighbourhood & Environmental Services

Scrutiny Overview



Questions